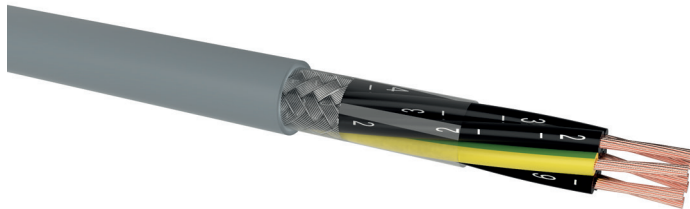


YSLCY-JZ or -OZ

PVC control cable, screened

DESIGN



- 1 | Bare copper conductors, fine wires class 5 according to DIN EN 60228 / VDE 0295 / IEC 60228
- 2 | Core insulation of special compound based on polyvinyl chloride (PVC)
- 3 | Cores are stranded in layers with optimal lay-length
- 4 | Wrapping with plastic tape
- 5 | Tinned copper wire braiding
- 6 | Outer sheath of special compound based on polyvinyl chloride (PVC), colour: grey (RAL 7001) or black (RAL 9005)

APPLICATION

As flexible control and connecting cable for fixed laying and flexible applications without tensile stress and/or without guided movements. Applicable in dry, damp and wet rooms, especially when excellent EMC characteristics are requested. Applicable for medium mechanical stress but not for outdoor use.

TECHNICAL DATA



Standard:
based on VDE 0281



Rated voltage:
300/500 V (U₀/U)



Test voltage:
core / core 4000 V / 50 Hz



Temperature range:
fixed installation: -40 °C up to 80 °C
flexible use: -5 °C up to 70 °C



Bending radius (min.):
fixed installation: 4 x Ø of cable
flexible use: 15 x Ø of cable



Core identification:
black (continuously numbered), with green / yellow ground conductor from 3 cores (JZ) or without (OZ)



Fire properties:
EN 60332-1-2: self-extinguishing and flame retardant
CPR classification: E_{ca}

Number of cores x nominal cross-section (mm ²)	Outer diameter (mm) appr.	Cu-value (kg/km)	Total weight (kg/km) appr.
YSLCY-JZ or -OZ			
2 x 0.5	5.6	36	45
3 x 0.5	6.1	43	56
4 x 0.5	6.7	49	68
5 x 0.5	7.3	57	80
7 x 0.5	7.9	59	100
10 x 0.5	9.5	92	143
12 x 0.5	10.4	104	160
14 x 0.5	11.0	116	180
16 x 0.5	11.5	129	202
21 x 0.5	12.8	159	252
25 x 0.5	14.5	211	318
30 x 0.5	15.3	238	363
34 x 0.5	16.3	270	420
40 x 0.5	17.3	297	465
50 x 0.5	19.6	362	575
61 x 0.5	20.8	424	675
2 x 0.75	6.5	43	63

YSLCY-JZ or -OZ

PVC control cable, screened

Number of cores x nominal cross-section (mm ²)	Outer diameter (mm) appr.	Cu-value (kg/km)	Total weight (kg/km) appr.
YSLCY-JZ or -OZ			
3 x 0.75	7.0	52	65
4 x 0.75	9.5	61	79
5 x 0.75	7.6	72	95
7 x 0.75	8.2	89	120
8 x 0.75	9.0	100	134
10 x 0.75	10.5	121	168
12 x 0.75	10.9	138	190
16 x 0.75	12.1	174	241
18 x 0.75	12.7	211	268
21 x 0.75	13.7	237	319
25 x 0.75	15.2	280	377
34 x 0.75	17.0	357	497
44 x 0.75	19.2	448	600
50 x 0.75	20.6	496	695
61 x 0.75	23.0	619	720
2 x 1	6.5	51	63
3 x 1	6.9	62	76
4 x 1	7.5	74	94
5 x 1	8.2	88	110
7 x 1	8.9	112	141
10 x 1	11.4	152	202
12 x 1	11.8	174	232
14 x 1	12.4	217	259
16 x 1	13.0	241	305
18 x 1	14.2	268	342
21 x 1	15.0	302	386
25 x 1	17.0	354	464
30 x 1	17.6	407	530
34 x 1	19.1	548	604
50 x 1	22.6	671	549
2 x 1.5	7.7	65	97
3 x 1.5	8.1	82	106
4 x 1.5	8.9	100	131
5 x 1.5	9.5	110	156
7 x 1.5	10.7	154	203
8 x 1.5	11.7	172	227
10 x 1.5	14.0	236	310
12 x 1.5	13.5	268	341
14 x 1.5	15.3	302	389
16 x 1.5	16.1	338	438
18 x 1.5	17.1	373	490

YSLCY-JZ or -OZ

PVC control cable, screened

Number of cores x nominal cross-section (mm ²)	Outer diameter (mm) appr.	Cu-value (kg/km)	Total weight (kg/km) appr.
YSLCY-JZ or -OZ			
21 x 1.5	18.1	422	553
25 x 1.5	20.6	530	667
32 x 1.5	22.3	645	817
34 x 1.5	23.2	686	874
44 x 1.5	26.5	899	1139
50 x 1.5	27.8	1001	1269
61 x 1.5	29.4	1183	1490
2 x 2.5	8.5	91	101
3 x 2.5	9.0	119	148
4 x 2.5	10.7	149	190
5 x 2.5	11.0	179	222
7 x 2.5	12.8	254	298
3 x 4	10.9	172	207
4 x 4	12.0	239	251
5 x 4	13.5	288	340
4 x 6	14.3	334	384
5 x 6	15.7	403	472
4 x 10	20.0	518	683
5 x 10	22.1	662	824
4 x 16	22.0	809	930
5 x 16	26.2	990	1203

Technical changes reserved. All figures are therefore without guarantee.

14.1.2022, 15:15