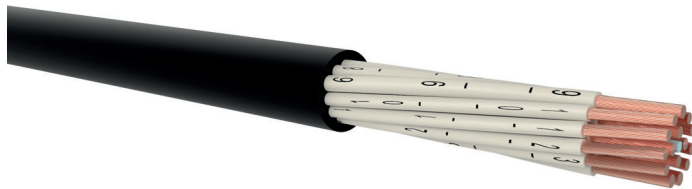


# FLEXICS® TRUCK FLRYY11Y

PVC/PUR power and control cable for commercial vehicles

## DESIGN



- 1 | Bare copper conductors, fine wires according to ISO 6722-1
- 2 | Core insulation of special compound based on polyvinyl chloride (PVC) or for data transmission core / control pairs based on modified polyolefins (MPO), thin wall insulation according to ISO 6722-1
- 3 | Power supply cores stranded together with control cores and construction-related fillers (optional)
- 4 | Mineral powder separation or non-woven wrapping over stranding (optional)
- 5 | Outer sheath of co-extruded special compound based on polyvinyl chloride (PVC) and special polyurethane (PUR), color: black (RAL 9005) or according to customers' requirements

## APPLICATION

These PVC and PUR double sheathed cables provide optimal solution for wiring of electrical installations in commercial vehicles. Due to additional PUR sheath cables offer high resistance to abrasion. ADR approval allows use in vehicles transporting hazardous goods.

## TECHNICAL DATA



**Standard:**  
acc. to ISO 6722-1 and ISO 14572 / temperature class A



**Rated voltage:**  
60 V (U<sub>0</sub>/U)



**Test voltage:**  
core / core                      5000 V / 50 Hz



**Temperature range:**  
operating temperature:    -40 °C up to 85 °C



**Bending radius (min.):**  
12 x Ø of cable



**Core identification:**  
acc. to ISO 4141-3, colour coded or continuously numbered, according to internal standards or client's requirements



**Fire properties:**  
ISO 6722-1, ISO 14572, ISO 4141



**Certificate:**  
ADR TŮ . EGG . 268 – 18

Number of cores x nominal cross-section (mm <sup>2</sup> )	Outer diameter (mm) appr.	Cu-value (kg/km)	Total weight (kg/km) appr.
<b>FLEXICS® TRUCK FLRYY11Y</b>			
2 x 0.5	5.0	9.6	37
7 x 0.75	7.3	50.4	79
2 x 1	6.0	19.2	55
3 x 1	6.3	28.8	67
4 x 1	6.8	38.4	81
5 x 1	7.5	48.0	97
5 x 1 + 1 x 2.5	9.0	72.0	133
6 x 1 + 1 x 1.5	8.3	72.0	187
2 x 1.5	6.6	28.8	68
2 x 1.5 + 2 x 0.75	7.2	43.2	85
3 x 1.5 + 2 x 4	11.6	120.0	197
3 x 1.5 + 2 x 6	12.1	158.4	275
6 x 1.5 + 1 x 2.5	10.3	110.4	187
7 x 1.5	8.9	100.8	166
8 x 1.5 + 1 x 2.5	11.7	139.2	239



## FLEXICS® TRUCK FLRY11Y

PVC/PUR power and control cable for commercial vehicles

Number of cores x nominal cross-section (mm <sup>2</sup> )	Outer diameter (mm) appr.	Cu-value (kg/km)	Total weight (kg/km) appr.
<b>FLEXICS® TRUCK FLRY11Y</b>			
10 x 1.5 + 3 x 2.5 + (2 x 1.5)	14.4	244.8	395
10 x 1.5 + 3 x 2.5	14.4	216.0	367
18 x 1.5	13.7	259.2	407
25 x 1.5	16.1	360.0	560
50 x 1.5	23.4	720.0	998
2 x 4 + 3 x 1.5 + (2 x 1.5)	11.9	148.8	257
2 x 6 + 3 x 1.5 + (2 x 1.5)	12.1	187.2	321

Technical changes reserved. All figures are therefore without guarantee.

14.1.2022, 12:55