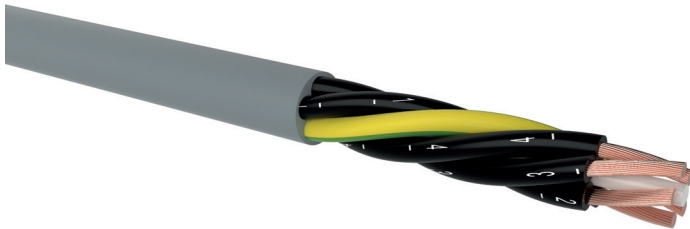


HSLH

FRNC control cable, halogen-free, unshielded

DESIGN



- 1 | Bare copper conductors, fine wires class 5 according to DIN EN 60228 / VDE 0295 / IEC 60228
- 2 | Core insulation of special halogen-free, flame retardant compound (FRNC)
- 3 | Cores are stranded in layers with optimal lay-length
- 4 | Outer sheath of special halogen-free, flame retardant compound (FRNC), colour: grey (RAL 7001)

APPLICATION

As flexible control and connecting cable for fixed laying and flexible applications without tensile stress and/or without guided movements. For the protection of human life and valuable equipment, especially when excellent EMC behavior is requested.

TECHNICAL DATA



Standard:
based on EN 50525-3-11



Rated voltage:
300/500 V (U₀/U)



Test voltage:
core / core 2000 V / 50 Hz



Temperature range:
fixed installation: -40 °C up to 70 °C
flexible use: -5 °C up to 70 °C



Bending radius (min.):
fixed installation: 4 x Ø of cable
flexible use: 15 x Ø of cable



Core identification:
black (continuously numbered), from 3 cores with green/yellow ground conductor



Fire properties:
EN 60332-1-2, IEC 60332-1-2: self-extinguishing and flame retardant
EN 60332-3-24 (Category C): reduced flame propagation
EN 60754, IEC 60754-2: halogen-free; non-corrosive combustion gases
EN 61034-2, IEC 61034: smoke density

Number of cores x nominal cross-section (mm ²)	Outer diameter (mm) appr.	Cu-value (kg/km)	Total weight (kg/km) appr.
HSLH			
2 x 0.75	5.7	14.4	53
3 G 0.75	6.0	21.6	63
4 G 0.75	6.5	29.0	77
5 G 0.75	7.1	36.0	94
7 G 0.75	7.5	50.0	116
12 G 0.75	10.2	86.0	187
18 G 0.75	11.9	130.0	285
25 G 0.75	13.9	180.0	397
2 x 1	6.1	19.2	62
3 G 1	6.4	29.0	74
4 G 1	7.0	38.4	91
5 G 1	7.6	48.0	111
7 G 1	8.1	67.0	140
12 G 1	11.1	115.0	232
18 G 1	13.4	173.0	332
25 G 1	15.4	240.0	464
2 x 1.5	6.9	29.0	84

HSLH

FRNC control cable, halogen-free, unscreened

Number of cores x nominal cross-section (mm ²)	Outer diameter (mm) appr.	Cu-value (kg/km)	Total weight (kg/km) appr.
HSLH			
3 G 1.5	7.3	43.0	102
4 G 1.5	7.9	58.0	125
5 G 1.5	8.9	72.0	154
7 G 1.5	9.8	101.0	193
12 G 1.5	13.2	173.0	323
18 G 1.5	15.9	259.0	479
25 G 1.5	18.5	360.0	678
34 G 1.5	22.0	490.0	922
2 x 2.5	8.5	48.0	123
3 G 2.5	9.0	72.0	151
4 G 2.5	10.0	96.0	188
5 G 2.5	11.0	120.0	234
7 G 2.5	12.7	168.0	306
12 G 2.5	16.0	288.0	508
4 G 4	12.8	154.0	301
5 G 4	14.0	192.0	355
4 G 6	14.6	230.0	380
5 G 6	16.4	288.0	490
5 G 10	22.4	480.0	840

Technical changes reserved. All figures are therefore without guarantee.

14.1.2022, 15:25