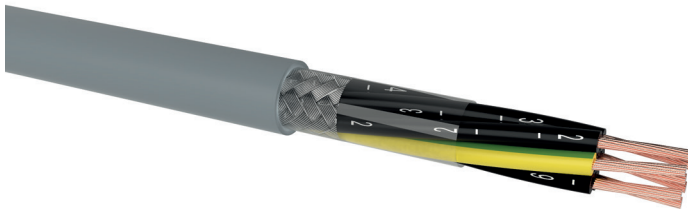


HSLCH

FRNC control cable, halogen-free, screened

DESIGN



- 1 | Bare copper conductors, fine wires class 5 according to DIN EN 60228 / VDE 0295 / IEC 60228
- 2 | Core insulation of special halogen-free, flame retardant compound (FRNC)
- 3 | Cores are stranded in layers with optimal lay-length
- 4 | Wrapping with plastic tape
- 5 | Tinned copper wire braiding
- 6 | Outer sheath of special halogen-free, flame retardant compound (FRNC), colour: grey (RAL 7001)

APPLICATION

As flexible control and connecting cable for fixed laying and flexible applications without tensile stress and/or without guided movements. For the protection of human life and valuable equipment, especially when excellent EMC behavior is requested.

TECHNICAL DATA



Standard:
based on EN 50525-3-11



Rated voltage:
300/500 V (U₀/U)



Test voltage:
core / core 2000 V / 50 Hz



Temperature range:
fixed installation: -40 °C up to 70 °C
flexible use: -5 °C up to 70 °C



Bending radius (min.):
fixed installation: 4 x Ø of cable
flexible use: 15 x Ø of cable



Core identification:
black (continuously numbered), from 3 cores with green/yellow ground conductor



Fire properties:
EN 60332-1-2, IEC 60332-1-2: self-extinguishing and flame retardant
EN 60332-3-24 (Category C): reduced flame propagation
EN 60754, IEC 60754-2: halogen-free; non-corrosive combustion gases
EN 61034-2, IEC 61034: smoke density

Number of cores x nominal cross-section (mm ²)	Outer diameter (mm) appr.	Cu-value (kg/km)	Total weight (kg/km) appr.
HSLCH			
2 x 0.75	6.7	43	53
3 G 0.75	7.0	52	63
4 G 0.75	7.5	61	77
5 G 0.75	8.1	72	94
7 G 0.75	8.7	89	116
12 G 0.75	11.4	138	187
18 G 0.75	13.3	211	285
25 G 0.75	16.0	280	397
2 x 1	7.1	51	62
3 G 1	7.4	62	74
4 G 1	8.0	74	91
5 G 1	8.7	88	111
7 G 1	9.3	112	140
12 G 1	12.3	185	232
18 G 1	14.7	268	332
25 G 1	17.7	354	464
2 x 1.5	8.0	65	84



HSLCH

FRNC control cable, halogen-free, screened

Number of cores x nominal cross-section (mm ²)	Outer diameter (mm) appr.	Cu-value (kg/km)	Total weight (kg/km) appr.
HSLCH			
3 G 1.5	8.4	82	102
4 G 1.5	9.1	100	125
5 G 1.5	9.9	119	154
7 G 1.5	11.1	154	193
12 G 1.5	14.7	268	323
18 G 1.5	17.3	373	479
25 G 1.5	21.0	530	678
2 x 2.5	9.7	92	123
3 G 2.5	10.2	118	151
5 G 2.5	12.1	176	234
7 G 2.5	13.9	253	306

Technical changes reserved. All figures are therefore without guarantee.

14.1.2022, 15:26