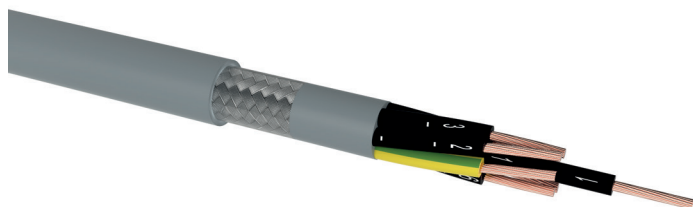


## H05VVC4V5-K

PVC control cable, oil resistant, screened

### DESIGN



- 1 | Bare copper conductors, fine wires class 5 according to DIN EN 60228 / VDE 0295 / IEC 60228
- 2 | Core insulation of special compound based on polyvinyl chloride (PVC)
- 3 | Cores are stranded in layers with optimal lay-length
- 4 | Inner sheath of special compound based on polyvinyl chloride (PVC)
- 5 | Tinned copper wire braiding
- 6 | Outer sheath of special oil resistant compound based on polyvinyl chloride (PVC), colour: grey (RAL 7001)

### APPLICATION

PVC control cable with increased oil resistant outer sheath for use as control and connecting cable for fixed laying and flexible applications in electrical devices, without tensile stress and/or guided movements. The cables are intended for indoor applications in dry, damp and wet rooms, especially when excellent EMC characteristics are requested.

### TECHNICAL DATA



**Standard:**  
EN 50525-2-51



**Rated voltage:**  
300/500 V (U<sub>0</sub>/U)



**Test voltage:**  
core / core 2000 V / 50 Hz



**Temperature range:**  
fixed installation: -30 °C up to 70 °C  
flexible use: -5 °C up to 70 °C



**Bending radius (min.):**  
fixed installation: 3 x Ø up to 12 mm  
4 x Ø over 12 mm  
flexible use: 5 x Ø up to 12 mm  
6 x Ø over 12 mm



**Core identification:**  
colours according to CENELEC HD 308 S2



**Fire properties:**  
EN 60332-1-2: self-extinguishing and flame retardant

Number of cores x nominal cross-section (mm <sup>2</sup> )	Outer diameter (mm) appr.	Cu-value (kg/km)	Total weight (kg/km) appr.
<b>H05VVC4V5-K</b>			
2 x 0.5	8.0	30	92
3 G 0.5	8.4	36	109
4 G 0.5	9.1	42	126
5 G 0.5	10.1	48	156
7 G 0.5	11.4	64	192
12 G 0.5	13.5	105	280
14 G 0.5	14.2	114	302
18 G 0.5	15.8	137	384
25 G 0.5	18.6	210	556
34 G 0.5	20.8	298	634
2 x 0.75	8.3	41	102
3 G 0.75	8.8	48	115
4 G 0.75	9.8	55	150
5 G 0.75	10.8	66	173
7 G 0.75	12.1	85	235
12 G 0.75	14.3	135	327

## H05VVC4V5-K

PVC control cable, oil resistant, screened

Number of cores x nominal cross-section (mm <sup>2</sup> )	Outer diameter (mm) appr.	Cu-value (kg/km)	Total weight (kg/km) appr.
<b>H05VVC4V5-K</b>			
18 G 0.75	16.9	190	488
25 G 0.75	20.0	275	654
34 G 0.75	22.1	340	821
2 x 1	8.6	48	114
3 G 1	9.3	59	142
4 G 1	10.2	70	175
5 G 1	11.0	84	205
7 G 1	12.9	106	264
12 G 1	15.6	174	420
14 G 1	15.7	198	433
18 G 1	17.4	240	561
25 G 1	21.1	332	766
34 G 1	24.1	420	996
2 x 1.5	9.1	69	146
3 G 1.5	10.2	75	176
4 G 1.5	10.9	90	207
5 G 1.5	11.6	108	235
7 G 1.5	13.5	157	314
12 G 1.5	16.8	240	500
18 G 1.5	20.0	355	707
25 G 1.5	24.2	448	950
34 G 1.5	26.3	754	1204
2 x 2.5	11.4	81	190
3 G 2.5	11.7	104	243
4 G 2.5	12.8	134	280
5 G 2.5	13.9	175	342
7 G 2.5	15.9	225	439
12 G 2.5	20.6	375	760
18 G 2.5	24.3	522	1052
25 G 2.5	29.0	897	1375
34 G 2.5	33.0	1179	1892

Technical changes reserved. All figures are therefore without guarantee.

14.1.2022, 15:12